

RECREATIONAL SPORTS

FACILITY HOURS

SPRING 2022

JANUARY 16 - MAY 14



POHL RECREATION CENTER

SUN	12:00PM - 12:00AM
MON - THU	6:00AM - 12:00AM
FRI	6:00AM - 10:00PM
SAT	10:00AM - 7:00PM

LEISURE POOL & SPA

SUN	1:00PM - 9:00PM
MON WED FRI	4:00PM - 9:00PM
TUE THU	7:00AM - 9:00AM
	4:00PM - 9:00PM
SAT	1:00PM - 5:00PM

CLIMBING WALL

SUN - FRI	3:00PM - 8:00PM
SAT	3:00PM - 7:00PM

P.E.B. FIELD

(WEATHER PERMITTING)

SUN	1:00PM - 11:00PM
MON - THU	4:00PM - 11:00PM
FRI	2:00PM - 9:00PM
SAT	11:00AM - 6:00PM

RACQUETBALL COURTS

MON - FRI	5:00PM - 8:00PM
-----------	-----------------

LAP POOL

SUN	1:00PM - 5:00PM
MON - FRI	11:00AM - 2:00PM
	4:00PM - 7:00PM
SAT	1:00PM - 5:00PM

OUTDOOR PURSUITS CENTER

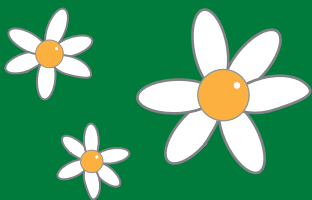
SUN - TUE	1:00PM - 6:00PM
WED	CLOSED
THU - SAT	1:00PM - 6:00PM

WARANCH TENNIS CENTER

MON - THU	5:30PM - 9:00PM
-----------	-----------------

IMPORTANT DATES

JAN 16	SPRING HOURS BEGIN
JAN 17	REC CENTER OPEN
JAN 18	SPRING CLASSES BEGIN
MAR 15 - 19	SPRING BREAK HOURS
APR 17	REC CENTER OPEN
MAY 6	REC CENTER CLOSING 7:00PM
MAY 15	SUMMER HOURS BEGIN



RECREATIONAL SPORTS

RECSPTS.UNT.EDU | (940) 565-2275
@UNTRECSPORTS

